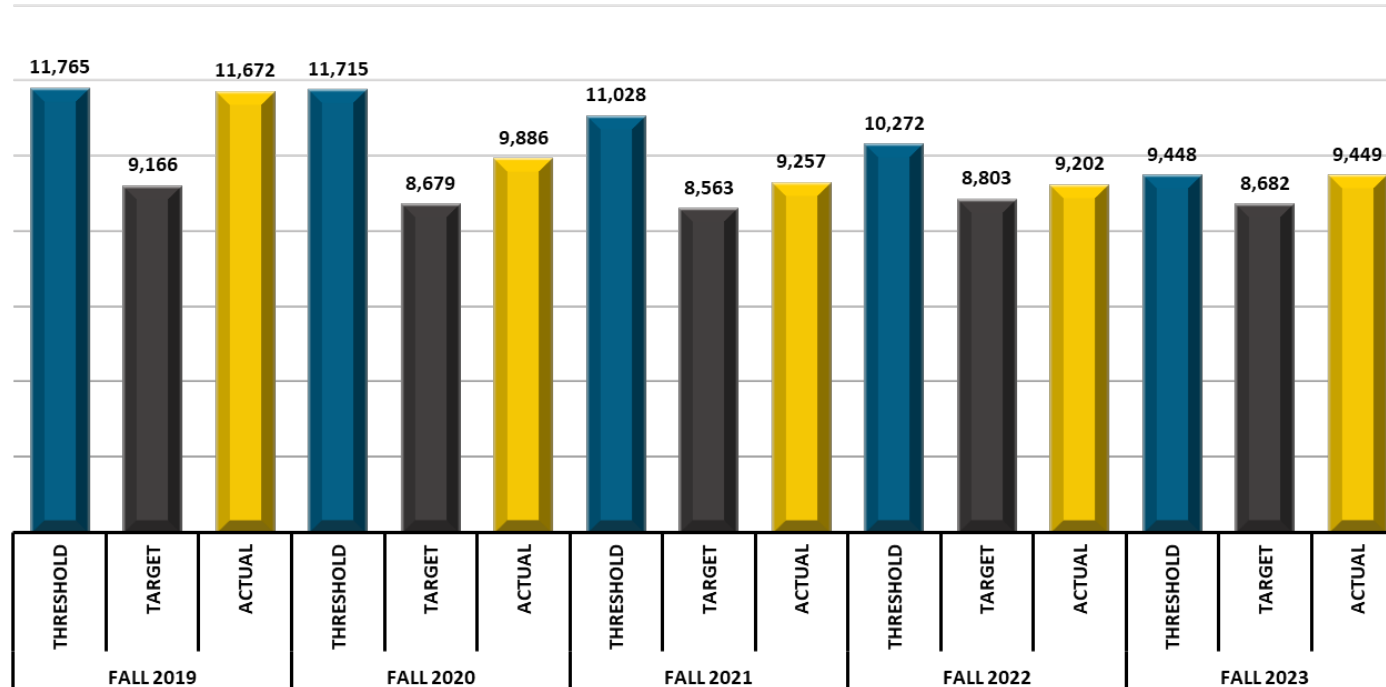




Pasco-Hernando State College

Student Achievement 2023-24

Fall Enrollment



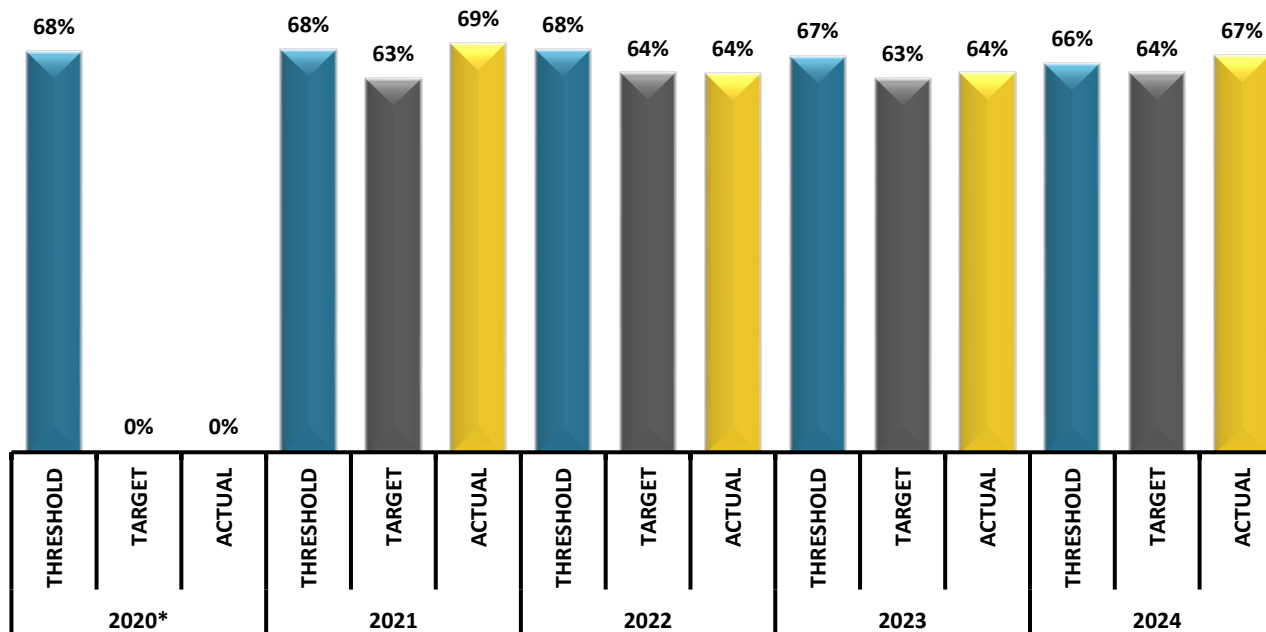
Note: Threshold = 3-year average of the actual results from the previous years.

The custom comparison group chosen by Pasco-Hernando State College for the target includes the following 10 institutions:

- Cape Fear Community College (Wilmington, NC)
- College of Central Florida (Ocala, FL)
- Florida Southwestern State College (Fort Myers, FL)
- John C Calhoun State Community College (Tanner, AL)
- Mississippi Gulf Coast Community College (Perkinston, MS)
- Pellissippi State Community College (Knoxville, TN)
- Polk State College (Winter Haven, FL)
- State College of Florida-Manatee-Sarasota (Bradenton, FL)
- Thomas Nelson Community College (Hampton, VA)
- Trinity Valley Community College (Athens, TX)

Source: IPEDS (headcount enrollment) and Data Feedback Reports.

Six-Year Retention Rate



Note: *There was no FLDOE Accountability Report produced for 2020.

Example: The 2021 report tracked AA, AS, and AAS students from Fall 2017 through winter/spring 2021, and PSVC and ATD students from Fall 2017 through Summer 2019.

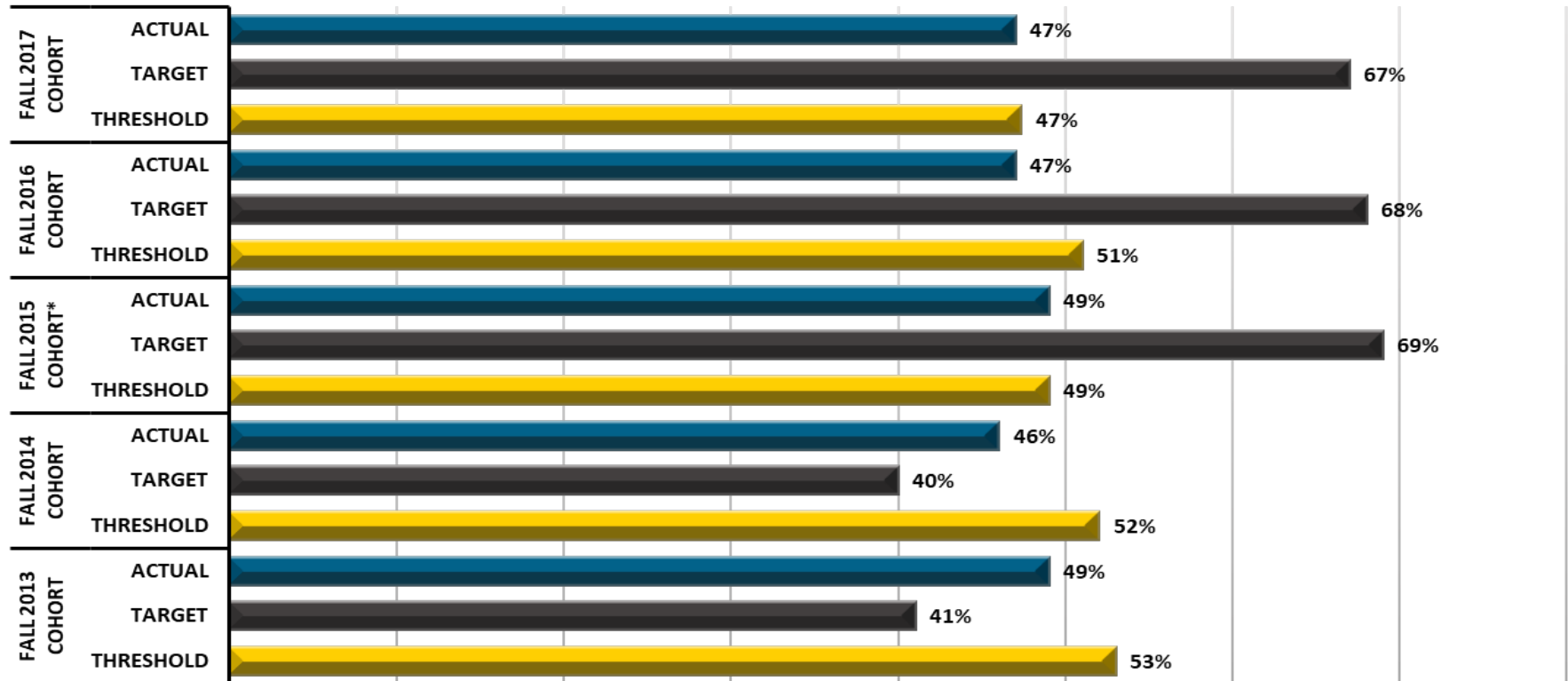
Retention rate = ((graduated + enrolled in good standing + enrolled not in good standing)/total cohort pop)*100.

Threshold = 3-year average of the actual results from the previous years.

Target = Florida College System institutions' average retention rate.

Source: FLDOE Accountability Report M1P2.

Six-Year Graduation Rate

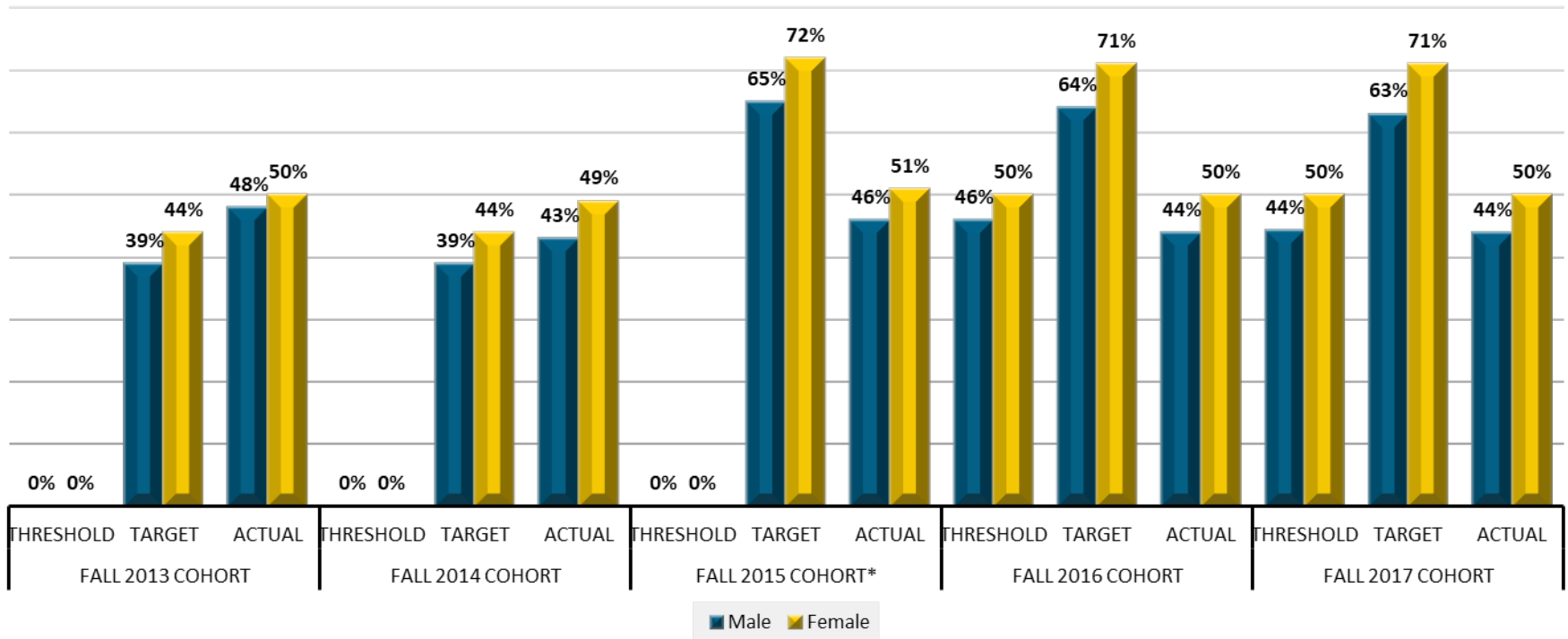


Note: *Beginning with the 2015 cohort, the Clearinghouse has reviewed and made adjustments to improve the underlying data used to inform this report. For the national benchmark, four-year public institutions were included in the report.

Threshold = 3-year average of the actual results from the previous years.
 Target = National benchmark.

Source: National Student Clearinghouse Student Tracker postsecondary completions institutional benchmark reports.

Six-Year Graduation Rate By Gender



Note: *Beginning with the 2015 cohort, the Clearinghouse has reviewed and made adjustments to improve the underlying data used to inform this report. For the national benchmark, four-year public institutions were included in the report.

Threshold = 3-year average of the actual results from the previous years.
Target = National benchmark.

Source: National Student Clearinghouse StudentTracker postsecondary completions institutional benchmark reports.

Six-Year Graduation Rate By Race/Ethnicity

Race/Ethnicity	Fall 2013 Cohort			Fall 2014 Cohort			Fall 2015 Cohort*			Fall 2016 Cohort*			Fall 2017 Cohort*		
	Threshold	Target	Actual	Threshold	Target	Actual	Threshold	Target	Actual	Threshold	Target	Actual	Threshold	Target	Actual
Asian	N/A	50%	100%	N/A	51%	N/A	N/A	81%	N/A	N/A	81%	N/A	N/A	80%	N/A
Black	N/A	29%	39%	N/A	28%	39%	N/A	51%	44%	41%	50%	37%	40%	49%	35%
Hispanic	N/A	37%	44%	N/A	36%	42%	N/A	60%	47%	44%	57%	50%	46%	56%	46%
White	N/A	49%	51%	N/A	49%	48%	N/A	74%	49%	49%	74%	48%	48%	73%	48%
Other	N/A	44%	73%	N/A	43%	61%	N/A	72%	62%	65%	69%	48%	57%	67%	57%
Two or More Races	N/A	40%	75%	N/A	38%	N/A	N/A	65%	100%	88%	64%	100%	100%	64%	63%
Unknown/Missing	N/A	29%	9%	N/A	29%	25%	N/A	64%	33%	22%	68%	<1%	29%	68%	47%

Note: *Beginning with the 2015 cohort, the Clearinghouse has reviewed and made adjustments to improve the underlying data used to inform this report. For the national benchmark, four-year public institutions were included in the report.

Threshold = 3-year average of the actual results from the previous years.
Target = National benchmark.

Source: National Student Clearinghouse StudentTracker postsecondary completions institutional benchmark reports.

Six-Year Graduation Rate By Pell Grant Recipients

	2011-12 Cohort			2012-13 Cohort			2013-14 Cohort			2014-15 Cohort			2015-16 Cohort		
	Threshold	Target	Actual	Threshold	Target	Actual	Threshold	Target	Actual	Threshold	Target	Actual	Threshold	Target	Actual
Pell Grant Recipients	N/A	N/A	28%	29%	N/A	30%	29%	N/A	31%	30%	N/A	29%	30%	32%	39%
Non-Pell Grant Recipients	N/A	N/A	38%	39%	N/A	40%	39%	N/A	40%	39%	N/A	41%	40%	41%	48%
First-Time, Full-Time, Degree/Certificate-Seeking Pell Grant Recipients	N/A	28%	33%	32%	27%	34%	33%	27%	34%	34%	27%	33%	34%	31%	40%
First-Time, Full-Time, Degree/Certificate-Seeking Non-Pell Grant Recipients	N/A	40%	47%	48%	38%	49%	48%	39%	51%	49%	39%	51%	50%	42%	52%
First-Time, Part-Time, Degree/Certificate-Seeking Pell Grant Recipients	N/A	16%	18%	19%	14%	20%	19%	14%	21%	20%	14%	22%	21%	17%	19%
First-Time, Part-Time, Degree/Certificate-Seeking Non-Pell Grant Recipients	N/A	20%	28%	29%	21%	32%	29%	20%	30%	30%	20%	30%	31%	22%	32%
Non-First-Time, Full-Time, Degree/Certificate-Seeking Pell Grant Recipients	N/A	36%	38%	43%	35%	51%	44%	39%	51%	47%	39%	52%	51%	39%	31%
Non-First-Time, Full-Time, Degree/Certificate-Seeking Non-Pell Grant Recipients	N/A	43%	55%	53%	36%	53%	53%	40%	48%	52%	40%	39%	47%	40%	29%
Non-First-Time, Part-Time, Degree/Certificate-Seeking Pell Grant Recipients	N/A	27%	38%	38%	26%	35%	35%	26%	44%	39%	26%	13%	31%	30%	14%
Non-First-Time, Part-Time, Degree/Certificate-Seeking Non-Pell Grant Recipients	N/A	30%	28%	31%	24%	29%	29%	28%	32%	30%	28%	30%	30%	28%	38%

Note: Threshold = 3-year average of the actual results from the previous years.

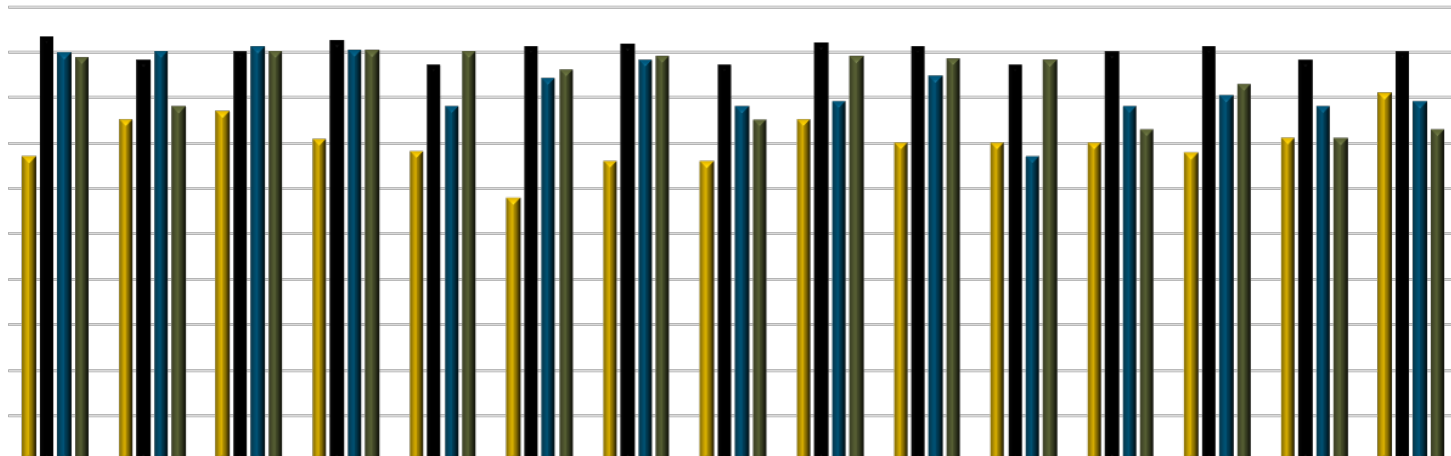
IPEDS does not provide an overall six-year graduation rate for the comparison group.

The custom comparison group chosen by Pasco-Hernando State College for the target includes the following 10 institutions:

- Cape Fear Community College (Wilmington, NC)
- College of Central Florida (Ocala, FL)
- Florida Southwestern State College (Fort Myers, FL)
- John C Calhoun State Community College (Tanner, AL)
- Mississippi Gulf Coast Community College (Perkinston, MS)
- Pellissippi State Community College (Knoxville, TN)
- Polk State College (Winter Haven, FL)
- State College of Florida-Manatee-Sarasota (Bradenton, FL)
- Thomas Nelson Community College (Hampton, VA)
- Trinity Valley Community College (Athens, TX)

Source: IPEDS Outcome Measures and Data Feedback Reports.

Job Placement Rate By Program Type

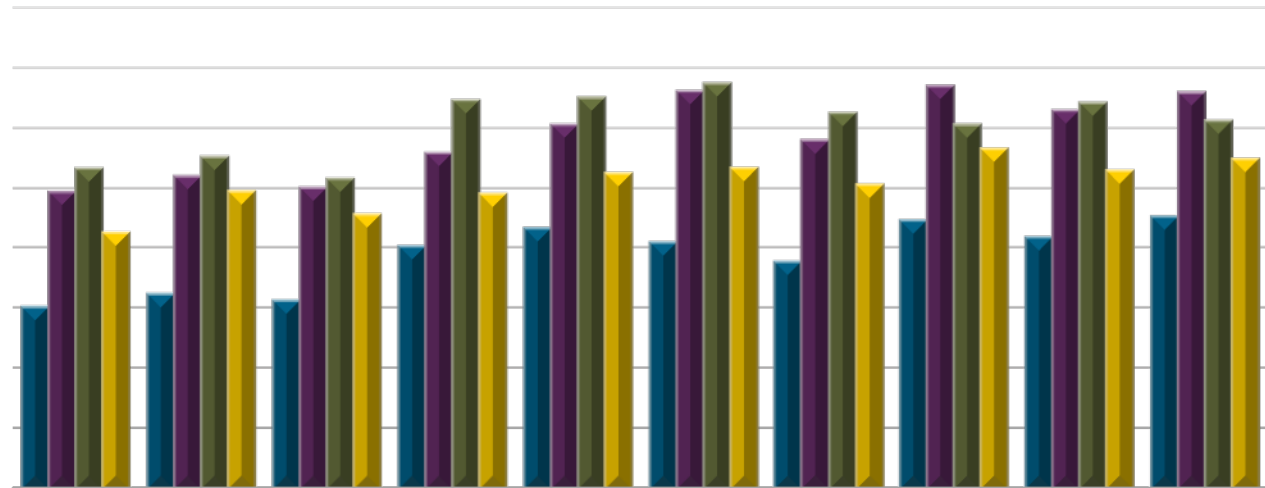


	Threshold	Target	Actual	Threshold	Target	Actual	Threshold	Target	Actual	Threshold	Target	Actual	Threshold	Target	Actual
	2019			2020			2021			2022			2023		
■ Applied Technology Diploma (ATD)	67%	75%	77%	71%	68%	58%	66%	66%	75%	70%	70%	70%	68%	71%	81%
■ Associate in Science (AS)	93%	88%	90%	92%	87%	91%	92%	87%	92%	91%	87%	90%	91%	88%	90%
■ Baccalaureate	90%	90%	91%	90%	78%	84%	88%	78%	79%	85%	67%	78%	80%	78%	79%
■ College Credit Certificate (CCC or PSVC)	89%	78%	90%	90%	90%	86%	89%	75%	89%	88%	88%	73%	83%	71%	73%

■ Applied Technology Diploma (ATD) ■ Associate in Science (AS) ■ Baccalaureate ■ College Credit Certificate (CCC or PSVC)

Note: Threshold = 3-year average of the actual results from the previous years.
 Target = Florida College System institutions' average job placement rate.
 Source: Florida College System Reports and Florida College System Vocational Reports.

Graduate Wages By Program Type



	Threshold	Actual	Threshold	Actual	Threshold	Actual	Threshold	Actual	Threshold	Actual
	2019		2020		2021		2022		2023	
■ Applied Technology Diploma (ATD)	\$30,111	\$32,108	\$31,231	\$40,124	\$43,172	\$40,669	\$37,634	\$44,261	\$41,685	\$44,950
■ Associate in Science (AS)	\$49,345	\$51,900	\$49,820	\$55,612	\$60,332	\$65,901	\$57,804	\$66,673	\$62,729	\$65,738
■ Baccalaureate	\$53,083	\$55,016	\$51,461	\$64,420	\$64,924	\$67,162	\$62,199	\$60,421	\$64,001	\$60,924
■ College Credit Certificate (CCC or PSVC)	\$42,443	\$49,192	\$45,432	\$48,792	\$52,312	\$53,200	\$50,395	\$56,248	\$52,747	\$54,654

■ Applied Technology Diploma (ATD) ■ Associate in Science (AS) ■ Baccalaureate ■ College Credit Certificate (CCC or PSVC)

Note: Threshold = 3-year average of the actual results from the previous years.
Source: Florida College System Reports and Florida College System Vocational Reports.

Licensure Exam Pass Rate

	2020			2021			2022			2023			2024		
	Threshold	Target	Actual	Threshold	Target	Actual	Threshold	Target	Actual	Threshold	Target	Actual	Threshold	Target	Actual
Dental Hygiene	100%	N/A	100%	100%	N/A	100%	100%	85%	100%	100%	85%	100%	100%	85%	92%
EMT - ATD (Emergency Medical Technician)*	70%	80%	75%	70%	80%	78%	70%	80%	87%	70%	75%	73%	79%	70%	61%
PARA - Cert (Paramedic)*	70%	90%	84%	70%	88%	95%	70%	88%	82%	70%	80%	87%	88%	71%	92%
Practical Nurse (PN)**	95%	66%	97%	97%	62%	99%	98%	80%	100%	99%	87%	100%	100%	85%	100%
Professional Education***	100%	82%	100%	100%	81%	100%	100%	85%	100%	100%	85%	100%	100%	85%	100%
Radiology****	94%	88%	N/A* ***	91%	84%	100%	92%	84%	84%	92%	84%	85%	90%	85%	92%
Registered Nurse (RN)**	89%	63%	96%	93%	89%	89%	93%	78%	88%	91%	88%	98%	92%	85%	97%
Fire Academy	100%	N/A	100%	100%	N/A	100%	100%	95%	95%	100%	95%	87%	94%	95%	89%
Correctional Officer (BRTP)	N/A	N/A	92%	97%	N/A	100%	97%	90%	100%	96%	90%	92%	97%	90%	100%
Florida Law Enforcement Academy	99%	N/A	93%	96%	N/A	96%	96%	90%	95%	95%	90%	97%	96%	90%	100%
Crossover from Correctional Officer to Law Enforcement Officer	N/A	N/A	97%	99%	N/A	100%	99%	90%	100%	99%	90%	100%	N/A	N/A	N/A
Crossover from Correctional Probation Officer to Law Enforcement Officer	N/A	N/A	100%	N/A	N/A	N/A	N/A	90%	N/A	N/A	90%	N/A	N/A	N/A	N/A
Crossover from Law Enforcement Officer to Correctional Officer	N/A	N/A	100%	N/A	N/A	N/A	N/A	90%	100%	N/A	90%	N/A	N/A	90%	100%
Law Enforcement Basic Training for Special Operation Forces Recruit	N/A	N/A	100%	N/A	N/A	N/A	N/A	90%	100%	N/A	90%	N/A	N/A	N/A	N/A
Unmanned Vehicles Systems Operation (program started in 2019-2020)	N/A	N/A	100%	N/A	N/A	100%	80%	100%	100%	80%	100%	100%	80%	100%	100%

Note: *The accreditor for EMT-ATD and PARA-Cert (Paramedic) programs requires a 70% minimum pass rate. The year of 2018 is the first year PARA-Cert (Paramedic) is required to use the national certification for paramedic.

**Target for PN and RN licensure exam pass rates = Florida PN and RN programs' average pass rates.

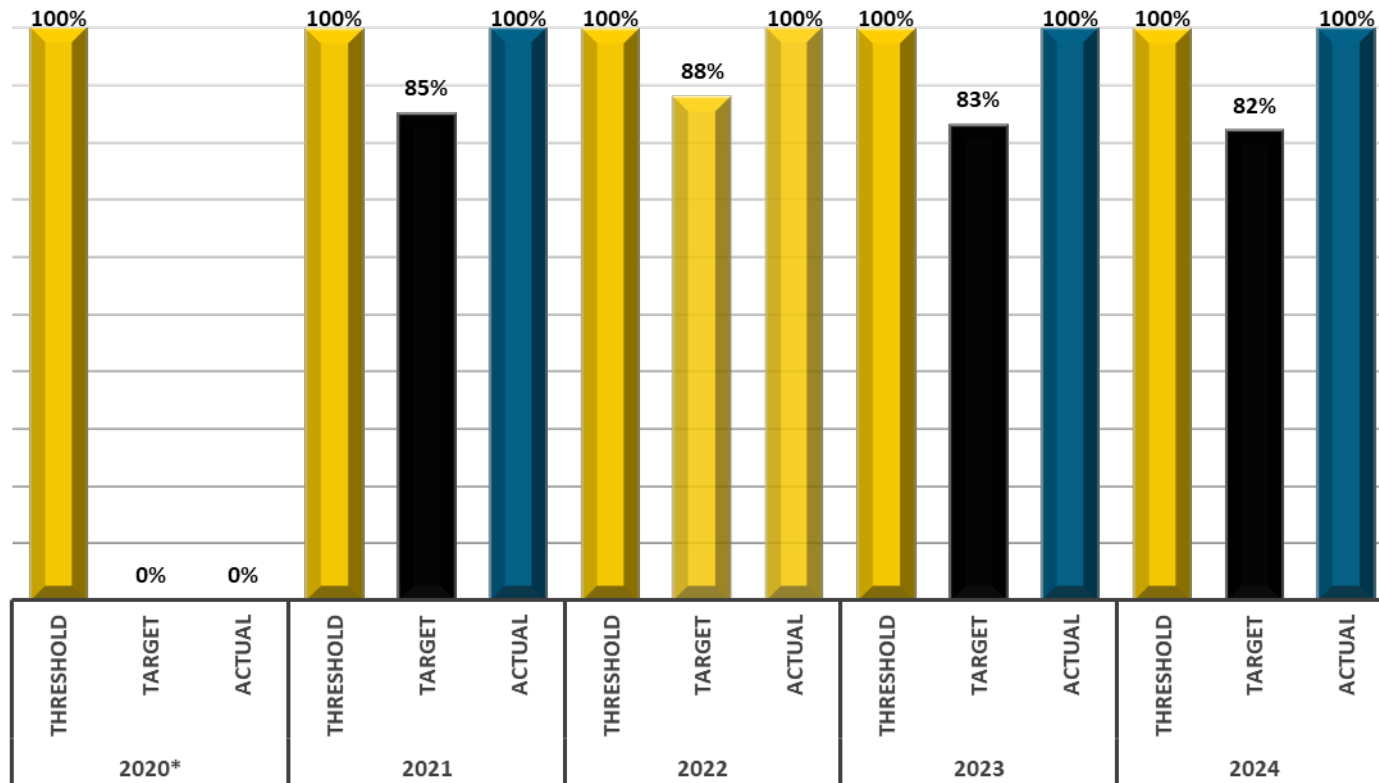
***The average pass rate for PHSC professional education from August 2016-July 2019 was 94%. Target = Florida Educator Preparation Institutes' average pass rate.

****For radiology licensure exam pass rate, there was no exam taken in 2020 due to COVID.

Threshold and Target were set by individual programs.

Source: Program directors and reports.

Success Rate



Note: *There was no FLDOE Accountability Report produced for 2020.

There was a two-year lag for each accountability report. For example, the 2021 report tracked AA, AS, and AAS students from Fall 2017 through winter/spring 2021, and PSVC and ATD students from Fall 2017 through Summer 2019.

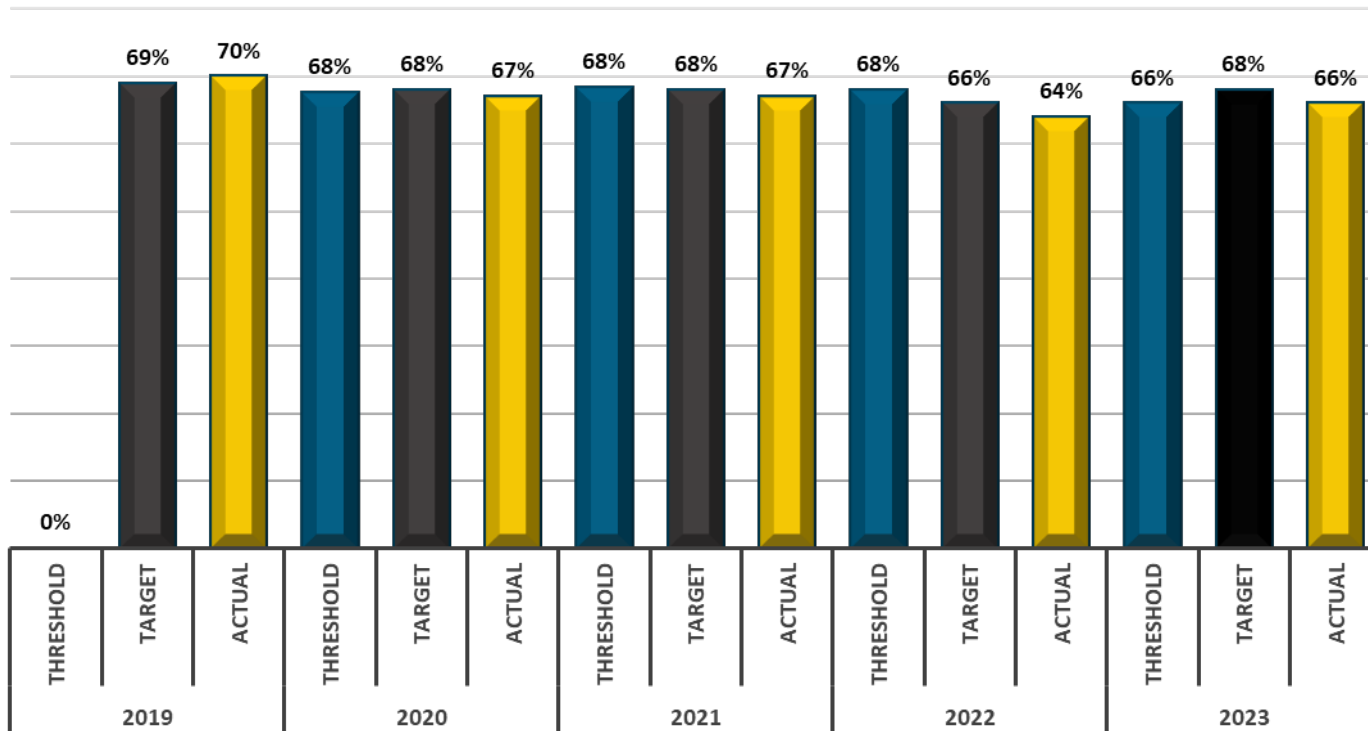
Success rate = $((\text{graduated} + \text{enrolled in good standing} + \text{left in good standing}) / \text{total cohort pop}) * 100$.

Threshold = 3-year average of the actual results from the previous years.

Target = Florida College System institutions' average success rate.

Source: FLDOE Accountability Reports.

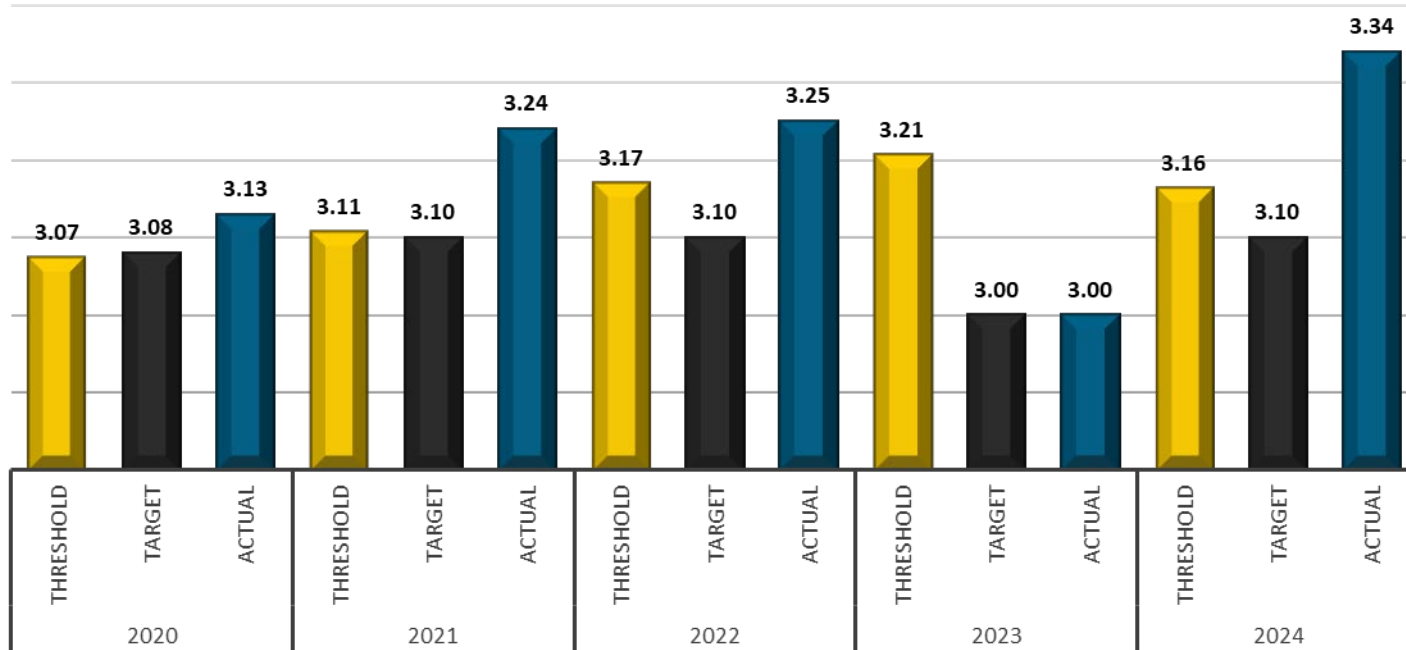
A.A. Graduates Continuing Education Rate



Note: Threshold = 3-year average of the actual results from the previous years.
 Target = Florida College System institutions' average AA graduates' continuing education rate.

Source: FLDOE FETPIP Florida College System Reports.

A.A. Graduates State University System GPA Performance



Threshold = 3-year average of the actual results from the previous years.

Target = Florida College System institutions' average AA graduates' SUS GPA performance.

Source: FLDOE-PERA Accountability Report M2.

Sources

1. IPEDS Outcome Measures and Data Feedback Reports
2. FLDOE Accountability Reports
3. National Student Clearinghouse – 6-Year Grad Rates
4. Florida College System Reports and Florida College System Vocational Reports
5. Licensure Exam Pass Rates reports from Department Chairs and Program Directors